



Middleton Street, London, , E2 9RR

£325,000

Elms Estates are absolutely delighted to bring to the market For Sale this One double bedroom apartment situated on the third floor.

James Middleton House is located in the heart of Bethnal Green within walking distance to Bethnal Green Underground & Overground station but also with multiple bus routes in to the City, West End and beyond and additionally the Glorious Victoria Park is within a short walk and offers Beautiful Open Spaces and Miles of Scenic Walks. The Relaxed, Cool Feel of Victoria Park Farmers Market will make for wonderful lazy Sunday morning strolls. This property really is set within the Heart of the East End with easy access to all of the Restaurants, Bars, Shops, Markets, Gyms, Parks, Galleries and Museums this Exciting Area has on offer.

Internally the property offers a very spacious separate kitchen and lounge, Double bedroom and a good size bathroom.

James Middleton House is offered to the market on a CHAIN FREE basis. An early internal inspection is highly recommended in order to avoid disappointment.



Lounge
15'5" x 10'9" (4.7 x 3.3)

Kitchen
9'10" x 5'2" (3.0 x 1.6)

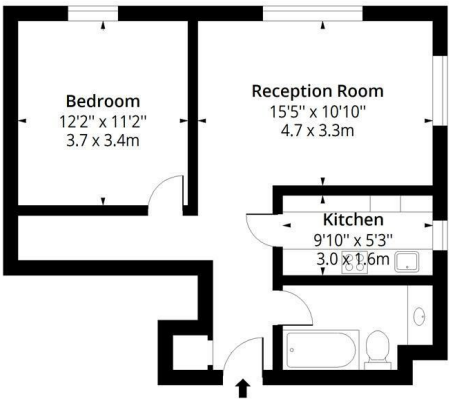
Bedroom
12'1" x 11'1" (3.7 x 3.4)

Bathroom



James Middleton House

Approx. Gross Internal Area 534 Sq Ft - 49.61 Sq M



Third Floor

Floor Area 534 Sq Ft - 49.61 Sq M

Floor plan is for illustrative purposes only and is not to scale. Every attempt has been made to ensure the accuracy of the floor plan shown, however all measurements, fixtures, fittings and data shown are an approximate interpretation for illustrative purposes only.

lpaplus.com



Energy Efficiency Rating			Environmental Impact (CO ₂) Rating		
Very energy efficient - lower running costs	Current	Potential	Very environmentally friendly - lower CO ₂ emissions	Current	Potential
(92 plus) A			(92 plus) A		
(81-91) B			(81-91) B		
(69-80) C			(69-80) C		
(55-68) D			(55-68) D		
(39-54) E			(39-54) E		
(21-38) F			(21-38) F		
(1-20) G			(1-20) G		
Not energy efficient - higher running costs			Not environmentally friendly - higher CO ₂ emissions		
England & Wales	EU Directive 2002/91/EC		England & Wales	EU Directive 2002/91/EC	